

# Huawei AR100 Series Enterprise Routers Datasheet

**Issue**        **V1.0**  
**Date**        **2016-07-25**

HUAWEI TECHNOLOGIES CO., LTD.





# Huawei AR100 Series Enterprise Routers Datasheet

Huawei's next-generation routers, the AR100 series are designed for enterprise branch offices and small businesses, delivering a comprehensive set of services, including routing, switching, security, and wireless access.

## Product Overview

The AR100 series are fixed interface routers that provide a comprehensive platform for a variety of network topologies. The AR100 employ embedded hardware encryption for security.

The AR100 series are mature, stable and quiet routers that offer high performance functionality for small networks, enabling small businesses to greatly increase productivity at a lower cost.




AR100s are easy to deploy, configure and customize, greatly reducing cost of deployment and maintenance, while offering maximum value to customers. These models allow network administrators to expand their networks easily and quickly, saving time and costs. Both models support firewalls, call processing, and application program functionalities.

The AR100 series includes the following models:

- AR109, AR109W, AR109GW-L

The specifications for these models are shown in the following table.

**Table 1: AR100 Models**

Model	Description
 AR109	<ul style="list-style-type: none"><li>• WAN speed with services (IMIX): 40 Mbps</li><li>• Fixed ports: 4 x GE LAN, 1 x VDSL2/ADSL, 1 x GE WAN</li><li>• Dimensions (H x W x D): 30 mm x 230mm x 130 mm</li></ul>
 AR109W	<ul style="list-style-type: none"><li>• WAN speed with services (IMIX): 40 Mbps</li><li>• Fixed ports: 4 x GE LAN, 1 x VDSL2/ADSL, 1 x GE WAN</li><li>• WLAN: 802.11b/g/n</li><li>• Dimensions (H x W x D): 30 mm x 230mm x 130 mm</li></ul>
 AR109GW-L	<ul style="list-style-type: none"><li>• WAN speed with services (IMIX): 40 Mbps</li><li>• Fixed ports: 4 x GE LAN, 1 x VDSL2/ADSL, 1 x GE WAN</li><li>• LTE: LTE FDD</li><li>• WLAN: 802.11b/g/n</li><li>• Dimensions (H x W x D): 30 mm x 230mm x 130 mm</li></ul>



## Product Features and Benefits

### ➤ **Small Size and High Performance**

- More applications: Huawei series routers use the dual-core processor that isolates the control plane from the forwarding plane and processes more enterprise applications. Huawei series routers improve user experience for multimedia service when streams overlap.
- Higher performance: The AR100s can process various enterprise applications, and its service processing capability is four times that in the industry.
- Greater potential: Huawei series routers provide the capability to migrate services to the LTE networks.

### ➤ **Low Investment with High Returns**

- Easy to construct: The AR100s supports plug-and-play, intelligent configuration, and deployment using the USB flash drive. It can function immediately after being installed. Users do not need to configure an IP address manually. The PPP and VPN indicators show the status of corresponding services. The AR100s helps to quickly construct an enterprise IT network.
- Simplified solution: Huawei provides an all-around solution that integrates the routing, switching, security, and wireless services. Customers can customize solutions as required.
- Easy to expand: Huawei series routers have four GE ports, can access more employee for small enterprises. The two uplink WAN ports implement load balancing and link protection, maximizing the return on investments.

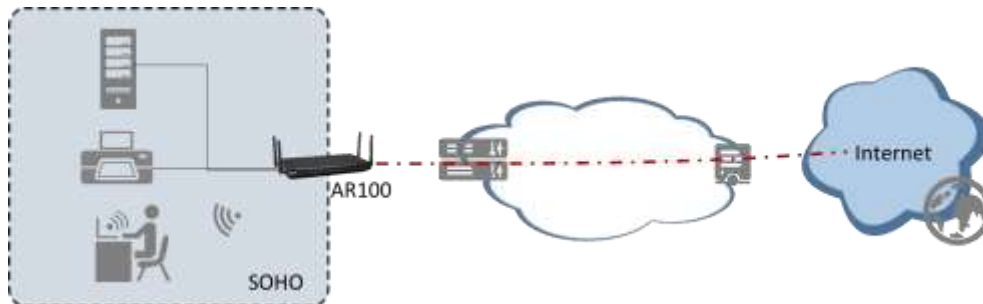
### ➤ **Small footprint on a Comprehensive Platform**

- Maturity and Stableness: The AR100s uses the Huawei VRP operating system. In addition, the AR100s uses modularized hardware design, which brings good user experience.
- Low-noise office: Huawei series routers have no fan, which brings low noise and good user experience.
- Secure environment: The lightning failure rate of AR100s is only 3% of industry average. The AR100s can be applied in the harsh environment.



## Sample Deployments

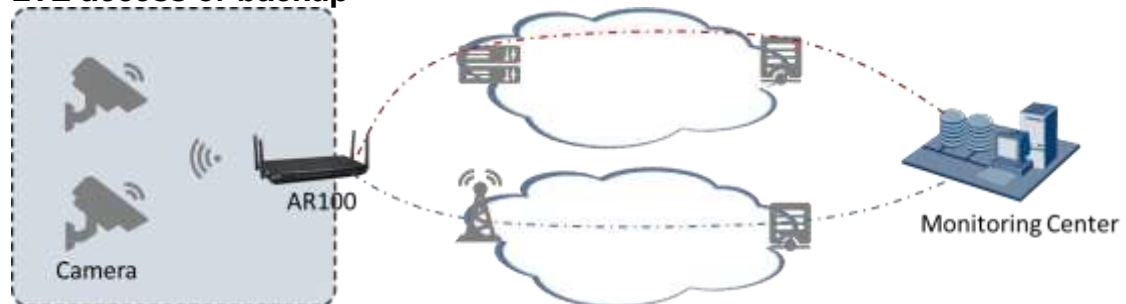
### SOHO



AR100s integrate VDSL2 and GE WAN interface, support broadband and Ethernet access, are flexible to choose to meet the needs of different scenarios of access.

AR100s integrate four managed LAN with VLAN support, meet the requirement of internal high speed connection. AR100s routers integrated WLAN wireless access capabilities, support 802.11b/g/n standard communication

### LTE access or backup



The AR100s routers complied with LTE/3G standards including FDD LTE and HSPA+, meeting the wireless communication requirements of remote access. In addition, the LTE/3G data link can be used as a backup for wired link to protect the VDSL2, GE uplinks. The backup link improves network stability and reduces network construction costs.



## Technical Specifications

Table 1: AR100 Technical Specifications

Item	AR109	AR109W	AR109GW-L
<b>Hardware</b>			
WAN speed with services* (IMIX)	40 Mbps	40 Mbps	40 Mbps
Fixed WAN ports	1 x VDSL2(compatible with ADSL2+ Annex A/M, Annex B/J), 1 x GE	1 x VDSL2(compatible with ADSL2+ Annex A/M, Annex B/J), 1 x GE	1 x VDSL2(compatible with ADSL2+ Annex A/M, Annex B/J), 1 x GE
Fixed Ethernet switching ports	4 x GE	4 x GE	4 x GE
Integrated LTE	—	—	LTE FDD B1/B2/B3/B4/B5/B7/B8/B20, all bands with diversity DC-HSPA+/HSPA+/HSPA/WC DMA B1/B2/B5/B8, all bands with diversity EDGE/GPRS/GSM 1900/1800/900/850 MHz
Wi-Fi	—	802.11 b/g/n	802.11 b/g/n
USB 2.0 ports	1	1	1
console ports	1	1	1
Memory size	256 MB	256 MB	256 MB
Flash memory	256 MB	256 MB	256 MB
Maximum power	24 W	24 W	24W
Power supply (AC)	100 V to 240 V	100 V to 240 V	100 V to 240 V
Frequency	50/60 Hz	50/60 Hz	50/60 Hz
Dimensions (H x W x D)	30 mm x 230 mm x 130 mm (1.18 in. x 9.1 in. x 5.1 in.)	30 mm x 230 mm x 130 mm (1.18 in. x 9.1 in. x 5.1 in.)	30 mm x 230 mm x 130 mm (1.18 in. x 9.1 in. x 5.1 in.)
Operating temperature	0° C to 45° C	0° C to 45° C	0° C to 45° C
Relative humidity	5% to 95% (non-condensing)	5% to 95% (non-condensing)	5% to 95% (non-condensing)
<b>Software</b>			
Basic features	ARP , PBR, DNS, DHCP, NAT		
WLAN(AP)	-	AP management, WLAN QoS, WLAN security, WLAN radio management, WLAN user management	
LAN	IEEE 802.1P, IEEE 802.1Q, IEEE 802.3, VLAN management, MAC address management, MSTP, etc.		



Item	AR109	AR109W	AR109GW-L
IPv4routing	static route, RIP, BGP		
IPv6 routing	static route, RIPng, BGP4+		
Multicast	IGMP version1/2/3,MLD		
VPN	IPSec VPN, GRE VPN, L2TP VPN		
QoS	priority mapping, traffic policing (CAR), traffic shaping, congestion avoidance (based on IP precedence/DSCP WRED), congestion management (LAN interface: SP/WRR/SP+WRR; WAN interface: PQ/CBWFQ), MQC (traffic classification, traffic behavior, and traffic policy),		
Security	ACL, firewall, 802.1x authentication, AAA authentication, RADIUS authentication, broadcast storm suppression, ARP security, ICMP attack defense, URPF, blacklist, IP source tracing, PKI, HTTPS,		
Management and maintenance	Upgrade management, device management, web-based GUI, RMON, NTP, Auto-Config, site deployment using USB disk, CLI		

\*Service performance depending on specific feature configuration.

## Ordering Information

The AR100 series routers are configured by selecting and installing the appropriate configuration module. The configuration module ordering information and descriptions are shown in the following table5-8.

**Table 5: Chassis Options**

Chassis Configuration	Description
AR109	AR109,1 GE WAN,1 VDSL2/ADSL WAN,4 GE LAN,1 USB2.0
AR109W	AR109W,1 GE WAN,1 VDSL2/ADSL WAN,4 GE LAN,WIFI 2.4G,1 USB2.0
AR109GW-L	AR109GW-L,1 GE WAN,1 VDSL2/ADSL WAN,4 GE LAN,1 LTE,WIFI 2.4G,1 USB2.0

**Table 6: Power Module Options**

Power Module	Description
W0ACPSE03	Adapter,0degC,40degC,90V,264V,12V/3A,C8/4pin

**Table 8: SD Card and USB Disk Options**

SD Cards & USB Disks	Description
NUSBDSK01	Storage USB DISK,4GB,USB 2.0

For more information, visit <http://enterprise.huawei.com/en/> or contact the Huawei local sales office.



## Professional Service and Support

Huawei Professional Services provides expert network design and service optimization tasks, helping customers design and deploy a high-performance network that is reliable and secure, maximizing return on investment as well as reducing operational expenses.

## Company Addendum

For more information, please visit <http://enterprise.huawei.com/en/> or contact your local Huawei office.

**Copyright © Huawei Technologies Co., Ltd. 2016. All rights reserved.**

No part of this document may be reproduced or transmitted in any form or by any means without prior written consent of Huawei Technologies Co., Ltd.

### NO WARRANTY

Unless otherwise specified, all statements, information, and recommendations in this document are provided "AS IS" without warranties, guarantees or representations of any kind, either express or implied.

To the maximum extent permitted by applicable law, in no event shall Huawei Technologies Co., Ltd. be liable for any special, incidental, indirect, or consequential damages, or lost profits, anticipated savings, business, revenue, data, or goodwill.

**Huawei Technologies Co., Ltd.**  
**Huawei Industrial Base**  
**Bantian, Longgang**  
**Shenzhen 518129**  
**People's Republic of China**  
**Tel: +86 755 287 80808**  
**Website: <http://www.huawei.com>**